



*Excellence*  
IN CUSTOM ELEVATOR  
CAB MANUFACTURING



2880 46TH AVE N · SAINT PETERSBURG, FL 33714  
PH: 727-525-8987 · FAX: 727-527-4022  
[WWW.ECABELEVATOR.COM](http://WWW.ECABELEVATOR.COM)

# Quality IS OUR PRIORITY

WHETHER IT'S CUSTOMER SERVICE OR CUSTOM DESIGN,  
**QUALITY IS OUR TOP PRIORITY .**

We provide our clients with superior products and support to assure an efficient and quality installation. Our commitment to quality control, code compliance, and unique craftsmanship offers our customers the most dependable, safe and attractive elevator interiors on the market today.

Here at e.CAB our top priority is always the customer. Our main focus is on service beyond the sale. When you need quality that is on time and a price that will keep you competitive in the marketplace, call on e.CAB. We are dedicated to serving the elevator industry by providing the finest of custom cab finishes as well as custom parts for your modernization projects and complete elevator cab shells for your new construction jobs. We can help design your cab and work with you on your budget.

Our line of products include custom passenger, freight and glass back elevators as well as custom interior packages that can be installed by e.CAB into your existing cab shell. We manufacture and install custom escalator cladding, custom handrails, wall panels and ceilings.

When you are working on that next elevator cab interior project and these words come to mind: Professionals, Excellent Planners, Aggressive, Dependable and Dedicated to Hard Work, then you need to call e.CAB Elevator.

e.CAB Elevator has the experience you are looking for.





# Concept

## TO COMPLETION

IT'S THE DETAILS  
THAT MAKE THE DIFFERENCE.

### PROJECT PROFILE: THE VUE - ORLANDO, FLORIDA

The elevator cabs at The Vue capture the elegance of brushed stainless steel and figured maple veneer wall panels, as well as an inner layered colored glass rear wall panel. These cabs are unique to incorporate such varied materials.



### PROJECT PROFILE: HARD ROCK CAFE

The Hard Rock Hotel and Casino wanted a design that would resemble the look of a 50's style hot rod. e.CAB built a cab that featured metal raised panels with a custom glitter automotive finish. The mirror finish stainless steel handrail was formed to resemble a chrome car bumper. The 4" mirror stainless steel letter above the panels are held off the wall with .75" studs for a unique 3-D marquee effect. Each unit featured its own color as well as its own song lyrics.





# Experience



KNOWLEDGE & LEADERSHIP  
WORKING FOR YOU

## CLIENTELE LIST:

- › THYSSENKRUPP ELEVATOR
- › OTIS ELEVATOR
- › KONE ELEVATOR
- › SCHINDLER ELEVATOR
- › GENERAL ELEVATOR
- › DISNEY, ORLANDO, FLORIDA
- › BATH CLUB, MIAMI BEACH, FLORIDA
- › MIZNER PARK, BOCA RATON, FLORIDA
- › FOUR SEASONS, MIAMI BEACH, FLORIDA
- › VA BEACH CONVENTION CENTER, VA BEACH, VIRGINIA
- › MARCO MARRIOTT, MARCO ISLAND, FLORIDA
- › HARD ROCK HOTEL AND CASINO, TAMPA AND HOLLYWOOD, FLORIDA
- › RITZ CARLTON, SARASOTA, FLORIDA
- › R.S.A., RETIREMENT SYSTEMS OF ALABAMA



## CLIENTELE EXAMPLE:

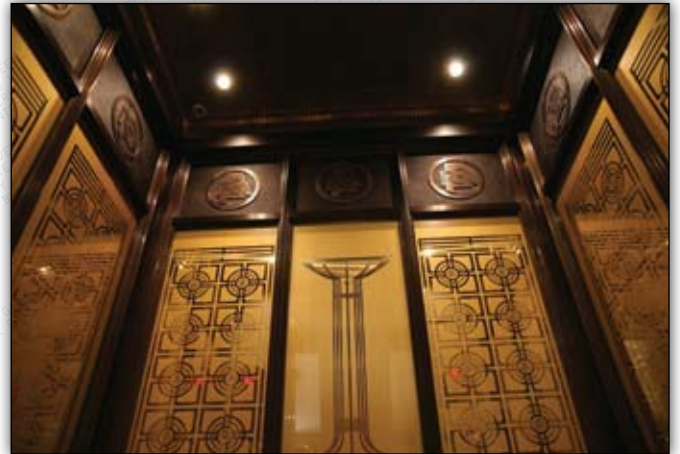
### R.S.A., RETIREMENT SYSTEMS OF ALABAMA

This custom job needed to capture the elegance of the building by using unique materials. We used warm dark tones with a custom stile and rail design to create a seamless fit. We were able to incorporate into the elevator interior exactly what RSA stands for: strength, stability and security. We were excited to have this opportunity and e.CAB exceeded all expectations.

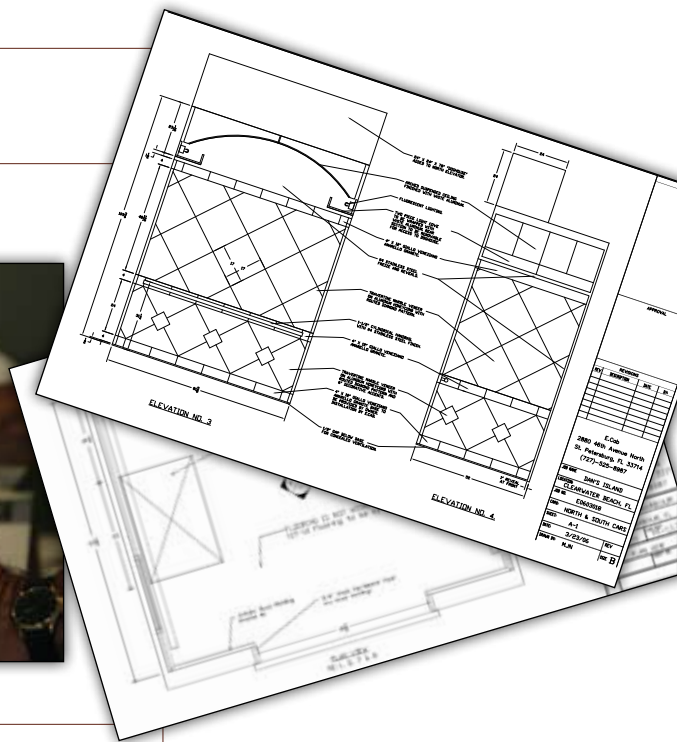
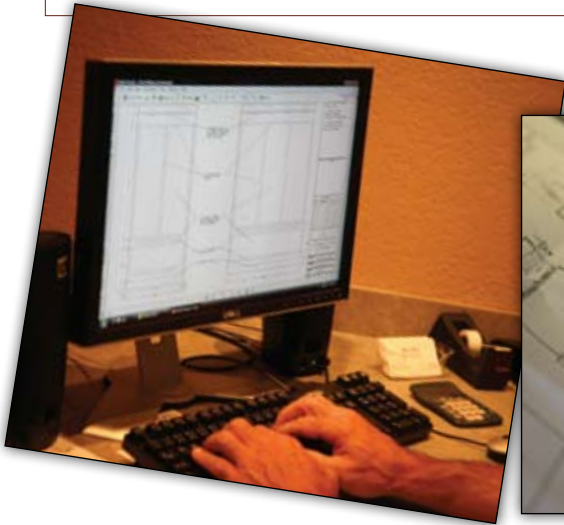
*Let us  
Create*



A PERFECT MATCH  
FOR YOU



# ENGINEERING



# MANUFACTURING



# INSTALLATION





# Customize

## YOUR CAB INTERIORS

LET e.CAB HELP YOU CUSTOMIZE  
YOUR CAB'S INTERIOR.

We offer a wide variety of materials such as woods, metals and plastics in order to match your interior perfectly. Just ask, we'll match!

### WOOD OPTIONS:

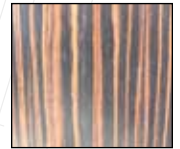
Distressed Mahogany



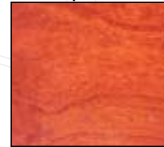
Quilted Maple



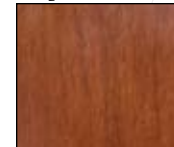
Zebrawood



Cherry



Maple



CUSTOM



MAPLE



DARK WOODS







## OF SOLUTIONS

### TYPE - 7 PANEL CONFIGURATION

- Seven raised panels faced and edged
- Laminate or finished wood veneer side and rear walls
- Reveals separating panels - laminate unless otherwise specified
- Concealed ventilation incorporated into design
- Meets flame Spread and Smoke Density
- Code compliant



### TYPE - 14 PANEL CONFIGURATION

- Fourteen raised panels faced and edged
- Laminate or finished wood veneer side and rear walls
- Reveals separating panels - laminate unless otherwise specified
- Concealed ventilation incorporated into design
- Meets flame Spread and Smoke Density
- Code compliant



### TYPE - 9 PANEL CONFIGURATION

- Nine raised panels faced and edged
- Laminate or finished wood veneer side and rear walls
- Reveals separating panels - laminate unless otherwise specified
- Concealed ventilation incorporated into design
- Meets flame Spread and Smoke Density
- Code compliant

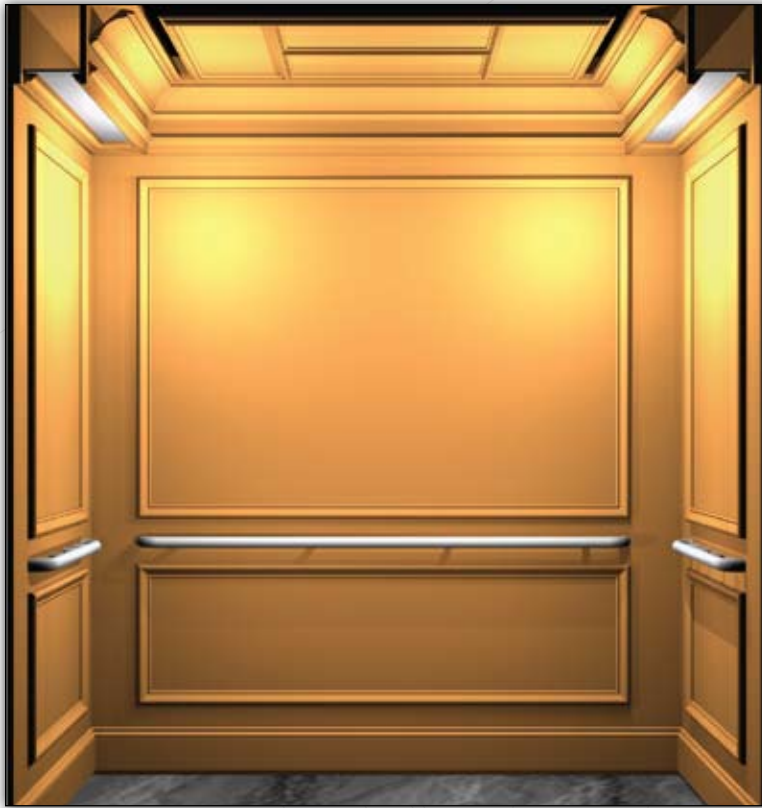


### STILE AND RAIL CONFIGURATION

- Stile and rail of wood veneer with hard wood trim
- Crown molding wrap the cab walls and front return
- Hardwood base on cab walls
- Concealed ventilation incorporated into design
- Meets flame Spread and Smoke Density
- Code compliant

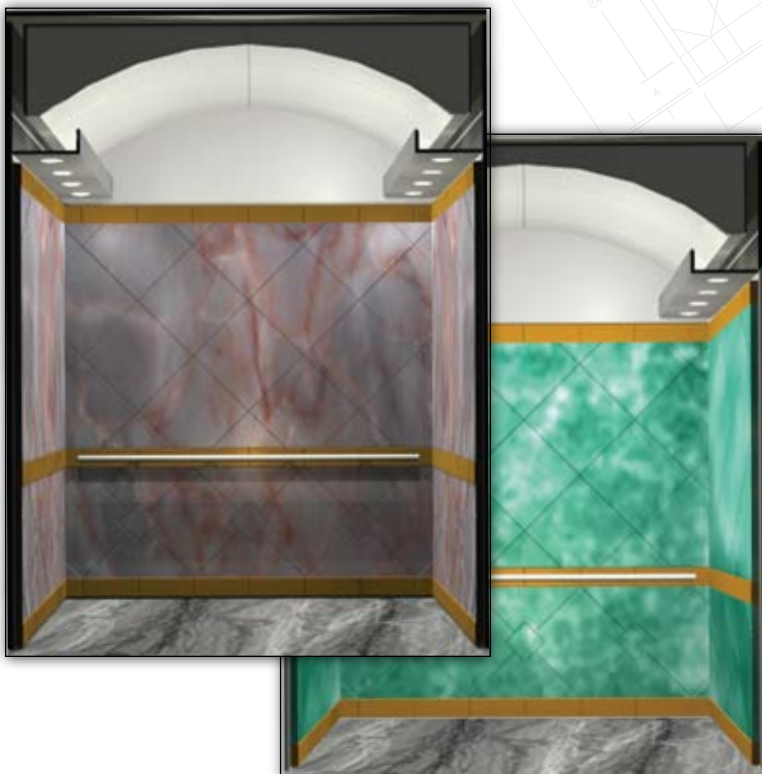
### TYPE - CUSTOM CONFIGURATION

- Rail and stile configuration
- Laminate or finished wood veneer side and rear walls
- Optional mirror in upper panels available
- Concealed ventilation incorporated into design
- Meets flame Spread and Smoke Density
- Code compliant



### TYPE - CUSTOM CONFIGURATION

- Light weight stone panels
- Custom barrel ceiling
- Cove lighting
- Concealed ventilation incorporated into design
- Meets flame Spread and Smoke Density
- Code compliant





# Panel

## OPTIONS

### METALS:

Brushed Brass



Brushed Stainless Steel



Metal Satin with Textures

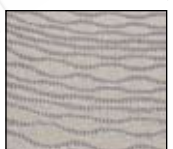


### UPHOLSTERY:

Burnished Cloth



The Richmond



Danmask Encore

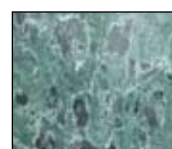


### STONE PANELS:

Rojo Alicante



Verde Empress



Giallo Santa Cecilia



## OPTIONS:

- STANDARD GRADE AND HD PLASTIC LAMINATES
- WOOD VENEERS
- STONE VENEERS
- FABRICS
- TEXTURE STAINLESS STEEL
- CUSTOM GLASS AND MIRRORS

# Handrail

## OPTIONS



We offer a variety of handrail solutions:  
Flatbar



Cylindrical continuous



Metal Cylindrical continuous



Custom made to your exact dimensions



# Accessories

WE UNDERSTAND  
YOUR NEEDS

We offer accessories that are unique, traditional or designed to blend into the aesthetics of your building's interior. We're ready to meet your design!

- › HOISTWAY FRAMES AND DOORS
- › CLADDING AND REFINISHING
- › REFINISHING CUSTOM CAB SHELL ENCLOSURES
- › ESCALATOR CLADDING
- › PROTECTIVE PADS AND BUTTONS
- › CAB DOORS
- › CONSULTING AND DESIGN
- › FREE ESTIMATES





2880 46TH AVE N  
SAINT PETERSBURG, FL 33714  
PH: 727-525-8987 FAX: 727-527-4022  
[WWW.ECABELEVATOR.COM](http://WWW.ECABELEVATOR.COM)

# **E**.GAB

**ELEVATOR**

*Excellence*  
IN CUSTOM ELEVATOR  
CAB MANUFACTURING



2880 46TH AVE N · SAINT PETERSBURG, FL 33714 · PH: 727-525-8987 · FAX: 727-527-4022  
[WWW.ECABELEVATOR.COM](http://WWW.ECABELEVATOR.COM)